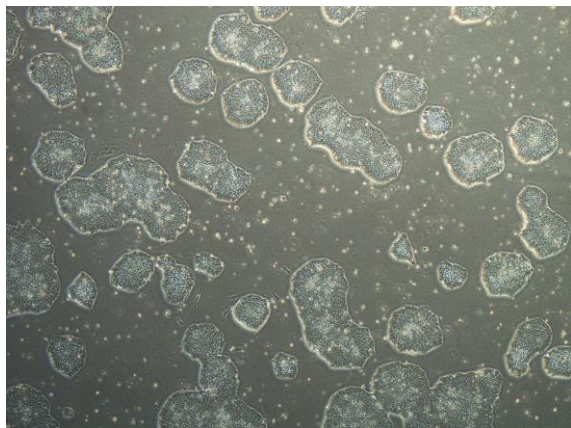
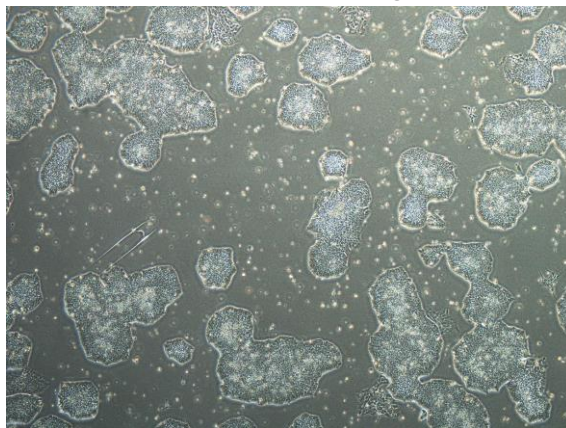


【 CiRA-j-1486 】 Morphology of iPSC colonies

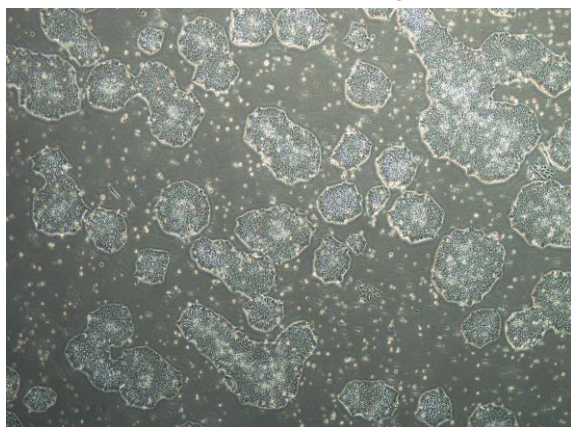
CiRA-j-1486-A: passage-3



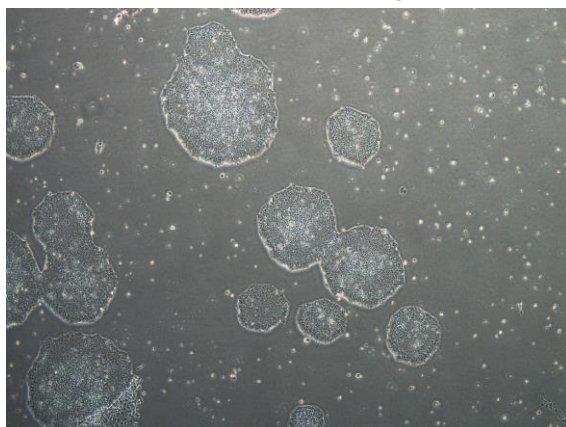
CiRA-j-1486-B: passage-3



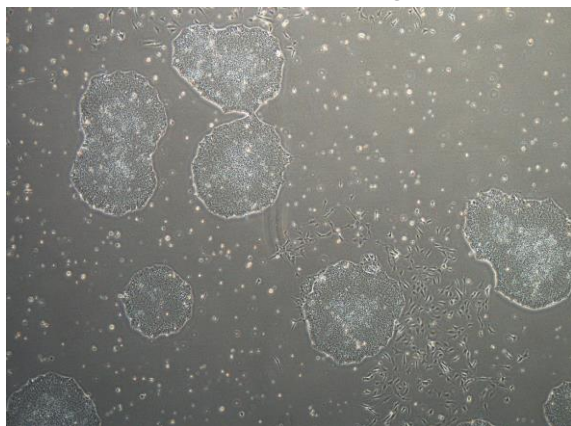
CiRA-j-1486-C: passage-3



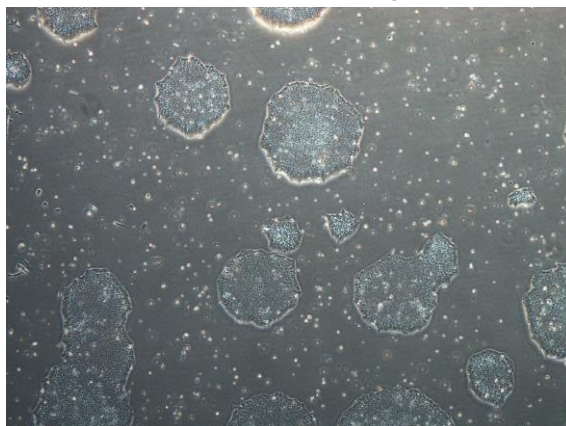
CiRA-j-1486-D: passage-3



CiRA-j-1486-E: passage-3



CiRA-j-1486-F: passage-3



(All images were captured at 4x magnification)